



"Standard" Separate-vacuum Hopper Loader

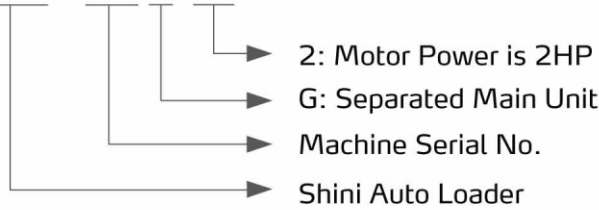
SAL-810G&SMH-6L



Refer carefully to this manual before operation.

■ Coding Principle

SAL - xxx G (2)



SAL-810G & SVH-6L

■ Features

- Microprocessor for ease of use and has multiple alarm indicators.
- Motor overload protector ensures long service life of motor.
- Audible material shortage alarm.
- Filter designed for easy cleaning and has filter status checking window for easier monitor of filter condition.
- SAL-700G/810G/820G/830G is equipped with RS485 communication interface.

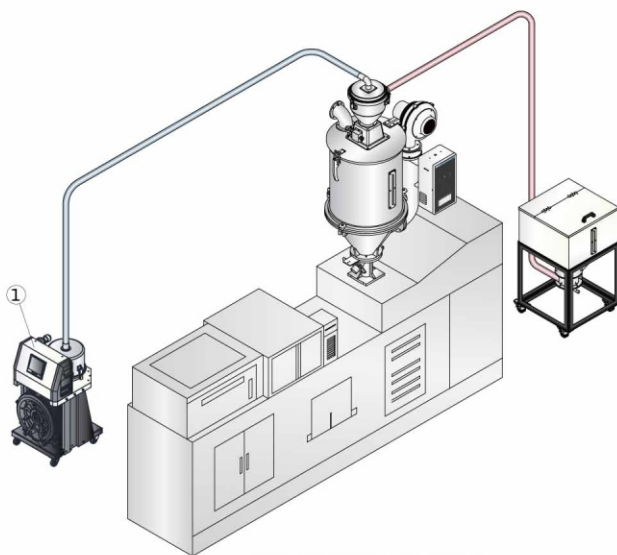


Control Panel
SAL-700g/810G

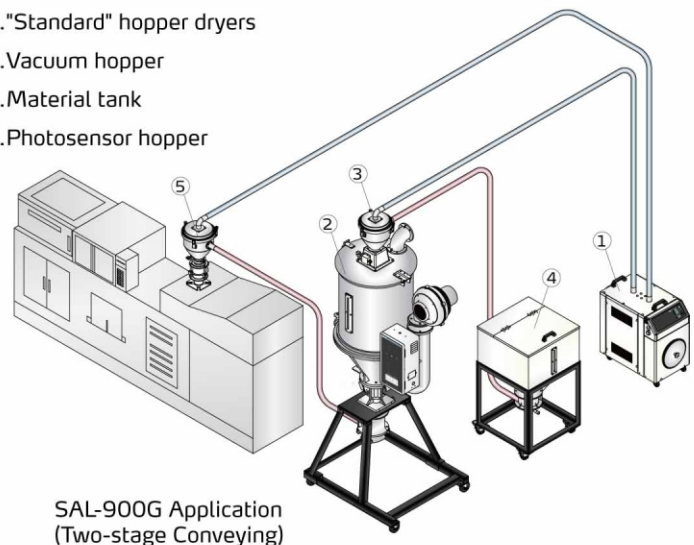


Control Panel
SAL-900G

■ Application

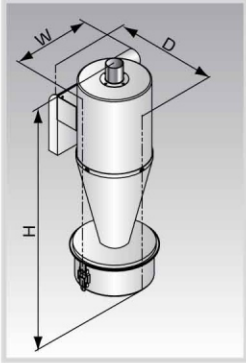


1. Vacuum loader
2. "Standard" hopper dryers
3. Vacuum hopper
4. Material tank
5. Photosensor hopper



Options

ACF

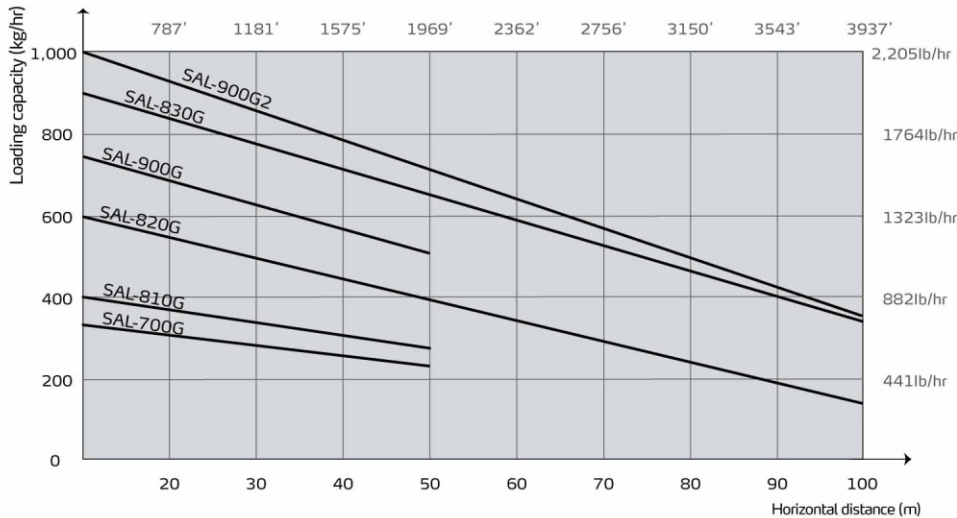


It is suggested to opt cyclone dust collector to reduce cleaning times of filter when regrind material occupies over 30% of total raw material.

Model	Capacity (H×W×D)		Pipe diameter (inch)
ACF-1	mm	550×220×235	1.5
	inch	21.7×8.7×9.3	
ACF-2	mm	550×220×235	2.0
	inch	21.7×8.7×9.3	

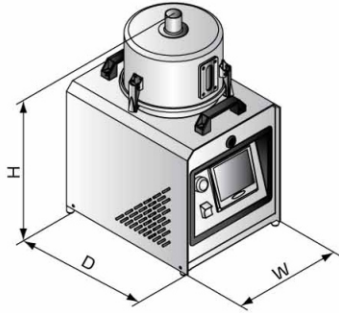
- For SHR, SCH-6U/12U/24U and SICH-6U/12U/24U are optional (Temperature reduction is below 30°C within 30min).
- Proportional valve SPV-U (control cabinet is optional) is available, which is adopted to mix virgin and regrind materials, as well as instantly recycle regrind material.
- For polished hopper inside ones, add "P" at the end of model code.

Loading Capacity

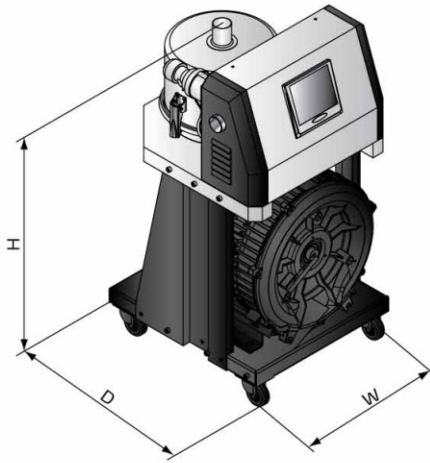


SAL-G Series

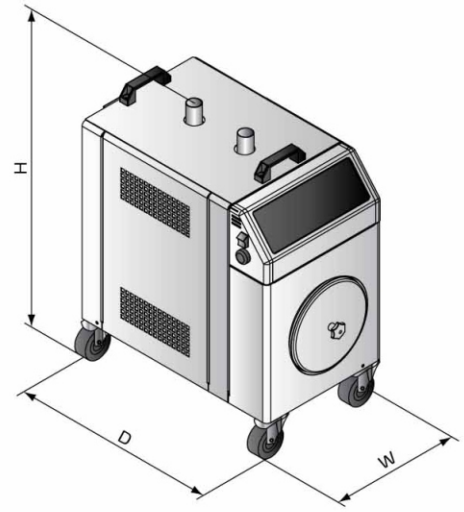
Outline Drawings



SAL-700G (Main Unit)



SAL-810G/820G/830G (Main Unit)



SAL-900G/900G2 (Main Unit)

Specifications

Model	Main Unit						Hopper Receiver				Conveying Pipe Dia (inch)	Air Suction Pipe Dia. (inch)	Conveying Capacity (50Hz)		
	Motor Type	Motor Power (kW, 50/60Hz)	Dimension H×W×D		Weight		Applied Model	Hopper Capacity		Weight			kg/hr	lb/hr	
			mm	inch	kg	lb		L	gal	kg					lb
SAL-700G	Carbon brush	1.2(1Φ)	595×300×410	23.2×11.8×16	18	40	SMH-6L	6	1.6	6	13	1.5	1.5	300	661
							SVH-6L			7	15				
SAL-810G	Inductive	0.75(3Φ)	740×400×410	29.1×15.7×16.1	58	128	SMH-6L	6	1.6	6	13	1.5	1.5	300	661
							SVH-6L			7	15				
							SHR-6U			6	13				
SAL-820G	Inductive	1.5(3Φ)	740×400×410	29.1×15.7×16.1	65	143	SMH-12L	12	3.2	7	15	1.5	1.5	500	1102
							SVH-12L			11	24				
							SHR-12U			7	15				
SAL-830G	Inductive	1.85(3Φ)	785×400×410	30.9×14.6×15.9	68	150	SMH-24L	24	6.4	9	20	2	2	700	1543
							SVH-24L			13	29				
							SHR-24U			9	20				
SAL-900G	Inductive	0.75(3Φ)	670×390×740	26.4×15.4×29.1	50	110	1×SMH-6L 1×SVH-6L	6	1.6	6	13	1.5	1.5	500	1102
							2×SMH-6L			11	24				
							2×SVH-6L			7	15				
SAL-900G2	Inductive	1.5(3Φ)	670×390×740	26.4×15.4×29.1	57	126	1×SMH-12L 1×SVH-12L	12	3.2	7	15	1.5	1.5	700	1543
							2×SMH-12L			7	15				
							2×SVH-12L			11	24				

Notes: 1) "SVH" stands for photosensor hopper receiver; "SMH" stands for vacuum hopper receiver.

"SHR-U" stands for Euro-hopper receiver.

2) Test condition of conveying capacity: Plastic material of bulk density 0.65kg/L(5.5lb/gal), dia. 3~5mm/0.12~0.2 inch, vertical conveying height: 4m/13.1Feet, horizontal conveying distance: 5m/16.4Feet.

3) All SAL-810G/820G/830G hoppers adopt the 4P heavy-duty connector, and all SAL-700G/900G/900G2 hoppers adopt the 3P metal connector.

4) Power supply: 3Φ, 230/400/460/575V, 50/60Hz for all models except SAL-700G (1Φ, 115/230V, 50/60Hz).

Shini Group

Addr: No. 23, Minhe St., Shulin Dist.,
New Taipei, Taiwan

Tel: +886 2 2680 9119

Fax: +886 2 2680 9229

Email: shini@shini.com

Factories:

- Taiwan
- Dongguan
- Pinghu
- Ningbo
- Chongqing
- Pune

2017-02-15-04 Copyrights Reserved.

www.shini.com