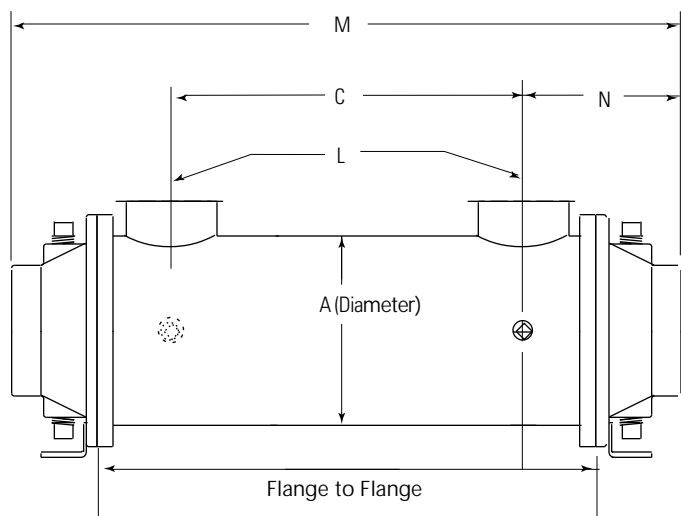


Shell & Tube Identification

Dimensions



A = _____ (inches)

Flange to Flange = _____ (inches)

M = _____ (inches)

C = _____ (inches)

N = _____ (inches)

L (Shell Side Connection) = _____ (NPT / SAE / OTHER)

Performance

HOT SIDE

FLUID TYPE: _____ (EG OIL/WATER/AIR/GLYCOL)

FLOW RATE: _____ GPM

INLET TEMP: _____ F

OUTLET TEMP: _____ F

COLD SIDE

FLUID TYPE: _____ (EG OIL/WATER/AIR/GLYCOL)

FLOW RATE: _____ GPM

INLET TEMP: _____ F

OUTLET TEMP: _____ F

Rating

Maximum Shell Pressure _____ psi

Maximum Tube Side Pressure _____ psi

Maximum Temperature _____ psi

Materials

Tubes Copper / CuNi / Stainless Steel

Hubs & Tubesheets Steel / CuNi / Brass / Stainless Steel

Shell Steel / Brass / Stainless Steel

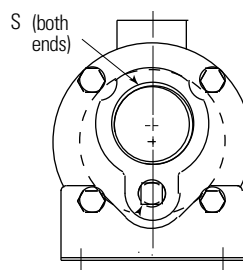
Baffles Brass / Stainless Steel

End Bonnets Cast Iron / Bronze / Stainless Steel

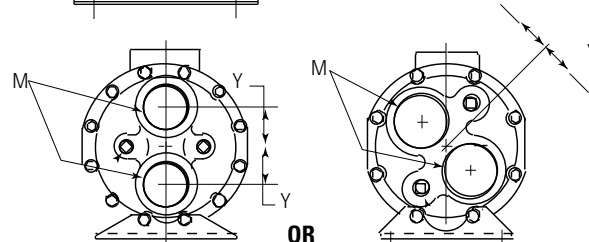
Pass Arrangement

(Circle One)

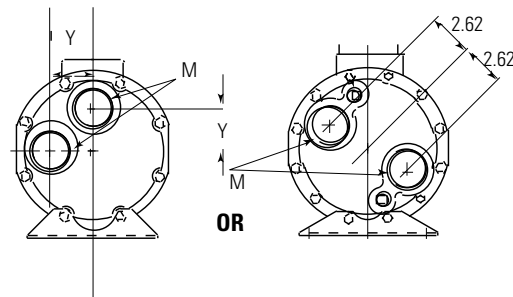
One Pass



Two Pass

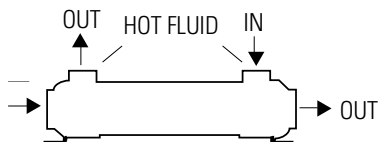


Four Pass



Typical Piping Hook-up

One Pass



Two and Four Pass

