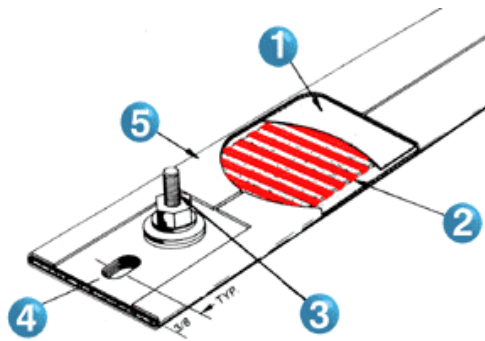


Strip Heaters



MICA STRIP HEATERS

Thin and light, fast response to temperature and process control & low cost



1. Top quality Mica insulation
2. Nickel-chrome ribbon engineered for longest life at rated watts & volts
3. Post terminals - riveted for positive electrical connection to element
4. 1/4" x 3/8" mounting hole
5. Standard steel sheath with special surface treatment to increase heat transfer and to retard oxidation (stainless steel option.) **Thickness: Nominal 3/16"**

Mica Strips With Post Terminals



PT1 Post terminals at each end of the heater with mounting slots. Available in 3/4" widths or wider.



PT2 Post terminals at same end of heater with mounting slots. Tandem along the length. Available in 1" widths or wider.



PT3 Post terminals at same end of heater with mounting slots. At right angle to length. Available in 2" widths or wider.



PT4 Post terminals at same end of heater with mounting slots. Terminals set off center along the length. Available in 1-1/2" widths or wider.

Mica Strips With Leads



LT1 Flexible fiberglass leads exiting heater from same end with mounting slots. Available in 1" widths or wider.



LT2 Flexible fiberglass leads exiting heater from each end with mounting slots.



BL3 Metal braided flexible leads exiting heater from outside top surface with mounting slots. Available in 1" widths or wider.



AL4 Flexible armor installed over fiberglass lead wire exiting heater from outside top surface with mounting slots. Available in 1" widths or wider.

SPECIFICATIONS

Length:

Minimum without mounting holes 2-1/2"

Minimum with mounting holes 3-1/2"

Maximum consult STS

Width:

Minimum, Types PT1-LT2 3/4"

Minimum, Type PT3 1-3/4"

Maximum consult STS

SHEATH TEMPERATURE

Maximum, standard units 900°F / 482°C

Maximum, stainless steel sheath 1200°F/ 650°C

Wattage: 35 watts/sq. in. recommended max.

Terminals: 10-24 x 7/16 post term. Or 12" flex leads

Voltage: Maximum 480vac

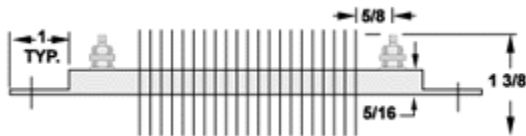
Strip Heaters



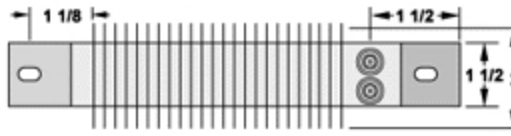
MICA STRIP HEATER OPTIONS

- Flexible armor installed over flexible leads
- Metal braid installed over flexible leads
- Flexible leads - Teflon and fiberglass
- Insulated nickel or nickel clad conductor
- Strain relief bracket
- Terminal Box
- Flexible Armor in Right Angle Bracket
- Thermocouple or Clearance Holes
- Button Terminals
- Appliance Pins
- Twist lock plug installed on leads
- Additional thickness, specify standard thickness is 3/16"
- Series with leads-specify option A, B or C
- Dual voltage, specify
- Stainless steel sheath, designed for higher sheath temperatures
- Grounding stud
- Series with post terminals
- Mounting slots 1/4" x 3/8", one at each end of strip
- Mounting slots 1/4" x 3/8" specify location

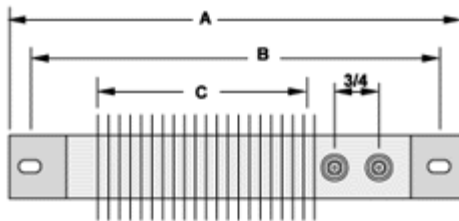
FINNED STRIP HEATERS



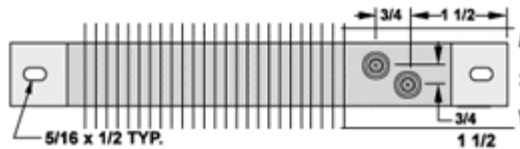
PT-EF 1-1/2" X overall length (A)
-5.625"



PT-PF 1-1/2" X overall length (A)
-4.652"



PT-TF 1-1/2" X overall length (A)
-5.75"



PT-OF 1-1/2" X overall length (A)
-5.25"



SPECIFICATIONS

- Insulation-** Ceramic Core
- Element-** Nickel Chrome coil
- Sheath-** Seamless Stainless Steel
- Thickness-** 5/16"
- Fin Size-** 1-3/8" x 2"
- Fin Material-** Nickel Plated Steel (ST.ST. Opt.)
- Fin Spacing-** 6 per inch
- Mounting Slot-** 5/16" x 1/2" 3/8" x 1/2"
- **Line voltage over 300 volts require secondary insulating bushing with larger Mtg. Slots**

Maximum Watt Density:

Still Air	Moving Air 600FT/MIN	Moving Air 1200FT/MIN
Up to 300°F - 20 watts/in ²	Up to 200°F - 40 watts/in ²	Up to 200°F - 50 watts/in ²
300 to 600°F - 16 watts/in ²	200 to 400°F - 30 watts/in ²	200 to 400°F - 35 watts/in ²
600 to 800°F - 10 watts/in ²	400 to 600°F - 20 watts/in ²	400 to 600°F - 25 watts/in ²

APPLICATIONS

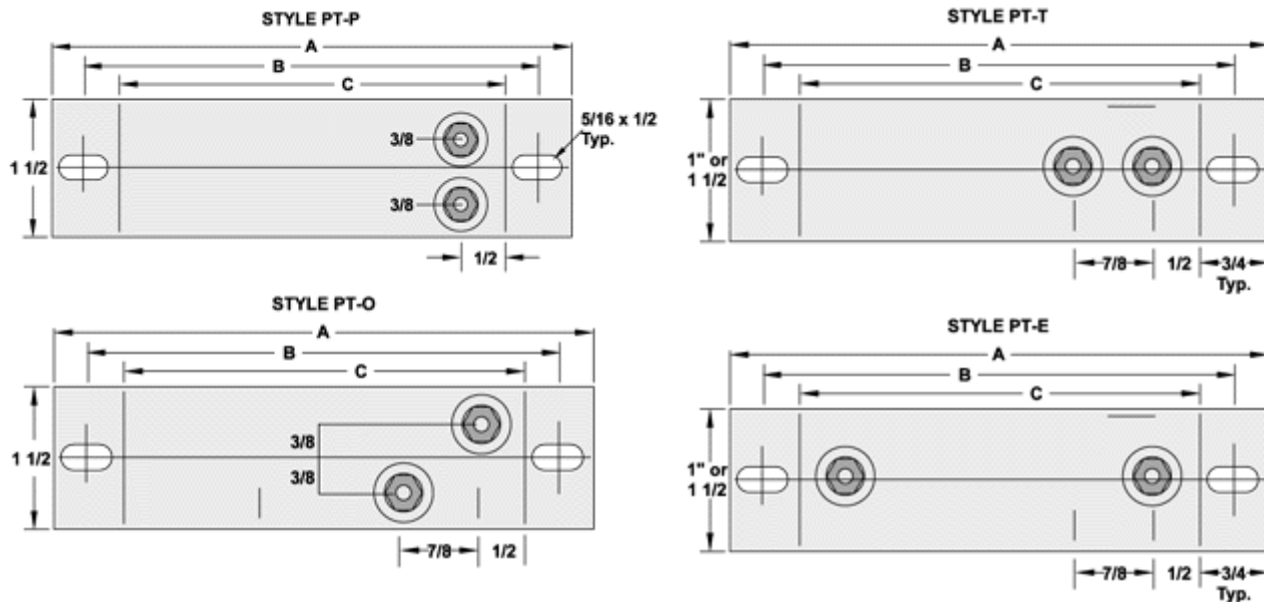
- Air & Gas Heating
- Oven & Duct Heating
- Load Banks
- Space Heaters
- Heat Curing
- Food Warmers
- Shrink Tunnels
- Moisture Protection
- Ink Drying

Strip Heaters



CERAMIC STRIP HEATERS

Black Star Radiant Strip Heaters. Heat Resistant coating is inorganic and baked to a peel-free finish.



Others sizes available. Please consult STS with your requirements.

SPECIFICATIONS

- Insulation-** Ceramic Core
- Element-** Nickel/Chrome Coil
- Sheath-** Stainless Steel (Heavy Gauge)
- Thickness-** 1/4"-5/16"-3/8"
- Temperature-** Up to 1400°F
- Watt Density-** Up to 45 watts/square inch
- Voltage-** Up to 240V (Consult STS for higher voltage)
- Terminals-** Post Type-Standard 10-24 Thread
- Length-** Minimum 4" up to any practical length
- Mounting Tabs-** Available with or without tabs
- Mounting Slots-** 5/16" X 1/2"

OPTIONS

- Leads-** Off top surface or from end (Braid/Armor)
- Post Terminal-** 2 on 1 end - 1 on each end
- Terminal Box Ceramic**
- Terminal Covers**

APPLICATIONS

- Air Heating
- Tank Heaters
- Platens
- Hot Plates
- Ovens
- Molds
- Sealing
- Thermoforming
- Dies

