

# Strip Heaters



## SSH STRIP HEATERS



SSH heaters are strip heaters specifically designed for applications requiring higher operating temperatures and densities. These heaters will operate with a sheath temperature of up to 900° F. The maximum density is 30 watts per sq. in. depending on the application.

SSH strip heaters are manufactured with #304 grade stainless steel, with Nichrome 80 grade resistance wire and ceramic tape.

SSH strip heaters can be manufactured for any voltage, wattage, single phase or dual circuit and various dimensions. Dimensions can vary from 1" to 6" maximum width with a maximum length of 60" (consult us for longer lengths). Multiple styles of electrical connections and terminal housings are offered. All heaters are CSA, UL, and CE Approved.

### Specifications

- Exterior material: 304b stainless steel
- Interior material: Nichrome 80 grade resistance wire
- Sheath temperature: up to 800° F
- Maximum watt density: 40 watts/sq. in.
- Minimum standard width: 1"
- Maximum standard width: 6"
- Maximum length: 60"
- Thickness: 0.350" – 0.375"

### Electrical Connection Options

- Post terminal
- Hi-Temperature wiring
- Metal braid (SS)
- Armour cable (AC)
- Ground Post
- Single Phase
- Three Phase
- Dual circuit
- Lead Wire

### Terminal Housing

- Terminal box
- Terminal block with ceramic box
- European plug
- European plug with terminal box
- Ceramic post covers
- Brass cap for sealed connection

### Applications

- Convention Air Heating
- Heating Plates
- Heating Cabinet
- Comfort Heating
- Transit Industry
- Load Banks

### Options

- Mounting holes
- Holes for Thermocouples (TC)

### Mounting Configurations:

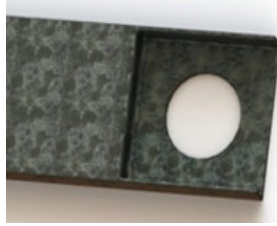
- Mounting kits are available.

**SSH CONFIG 1**



- The squashed end is 1" deep x 1.40".
- Slot size is 0.525" wide x 0.90" long.

**SSH CONFIG 2**



- The squashed end is 1" deep x 1.40".
- Slot size is 0.675" diameter hole.

**SSH CONFIG 3**



- The squashed end is 1" deep x 1.40".
- Slot size is 0.315" wide x 0.50" long.

**SSH CONFIG 4**



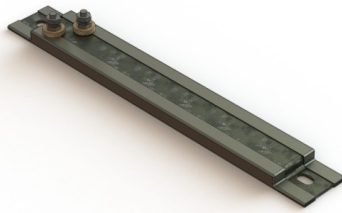
- The squashed end is 1" deep x 1.40".
- Slot size is 0.50" wide x 0.687" long.

### SSH1



- 10-32 stainless steel post terminal on each end of heater.
- Mounting hole.
- Manufactured with 304 2b stainless steel.
- Maximum: 40 watts/sq. in.
- Maximum sheath temperature 900° F.
- Available widths: 1-6"
- Maximum length: 60" (consult us for longer lengths)

### SSH2



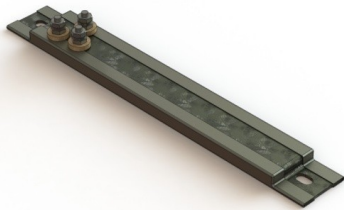
- 10-32 stainless steel post terminal on the same side of the heater.
- Mounting hole.
- Manufactured with 304 2b stainless steel.
- Maximum: 40 watts/sq. in.
- Maximum sheath temperature 900° F.
- Available widths: 1-6"
- Maximum length: 60" (consult us for longer lengths)

### SSH3



- 10-32 stainless steel post terminals in the middle of the heater.
- Mounting hole.
- Manufactured with 304 2b stainless steel.
- Maximum: 40 watts/sq. in.
- Maximum sheath temperature 900° F.
- Available widths: 1-6"
- Maximum length: 60" (consult us for longer lengths)

### SSH4



- 10-32 stainless steel post terminal on the same side of the heater for dual circuit or 3 Phase.
- Mounting hole.
- Manufactured with 304 2b stainless steel.
- Maximum: 40 watts/sq. in.
- Maximum sheath temperature 900° F.
- Available widths: 1-6"
- Maximum length: 60" (consult us for longer lengths)

### SSH5



- Wire exit from the top of heater.
- Wire is protected by stainless steel over braid (SS), high temperature sleeve and spring.
- Mounting hole.
- Manufactured with 304 2b stainless steel.
- Maximum: 40 watts/sq. in.
- Maximum sheath temperature 900° F.
- Available widths: 1-6"
- Maximum length: 60" (consult us for longer lengths)

### SSH6



- Wire exit from the top of heater.
- Wire is protected by a stainless steel inter-lock armor cable (AC).
- Mounting hole.
- Manufactured with 304 2b stainless steel.
- Maximum: 40 watts/sq. in.
- Maximum sheath temperature 900° F.
- Available widths: 1-6"
- Maximum length: 60" (consult us for longer lengths)

### SSH7



- European plug on one end of heater.
- Mounting hole.
- Manufactured with 304 2b stainless steel.
- Maximum: 40 watts/sq. in.
- Maximum sheath temperature 900° F.
- Available widths: 1-6"
- Maximum length: 60" (consult us for longer lengths)