



SureHeat

*Advanced Closed-Loop
System Control for
High Temperature Process
Heaters*



Closed-Loop Solution

The new and improved closed-loop control panel solutions from Tutco SureHeat, combines the latest advances in heater controls and safety features.



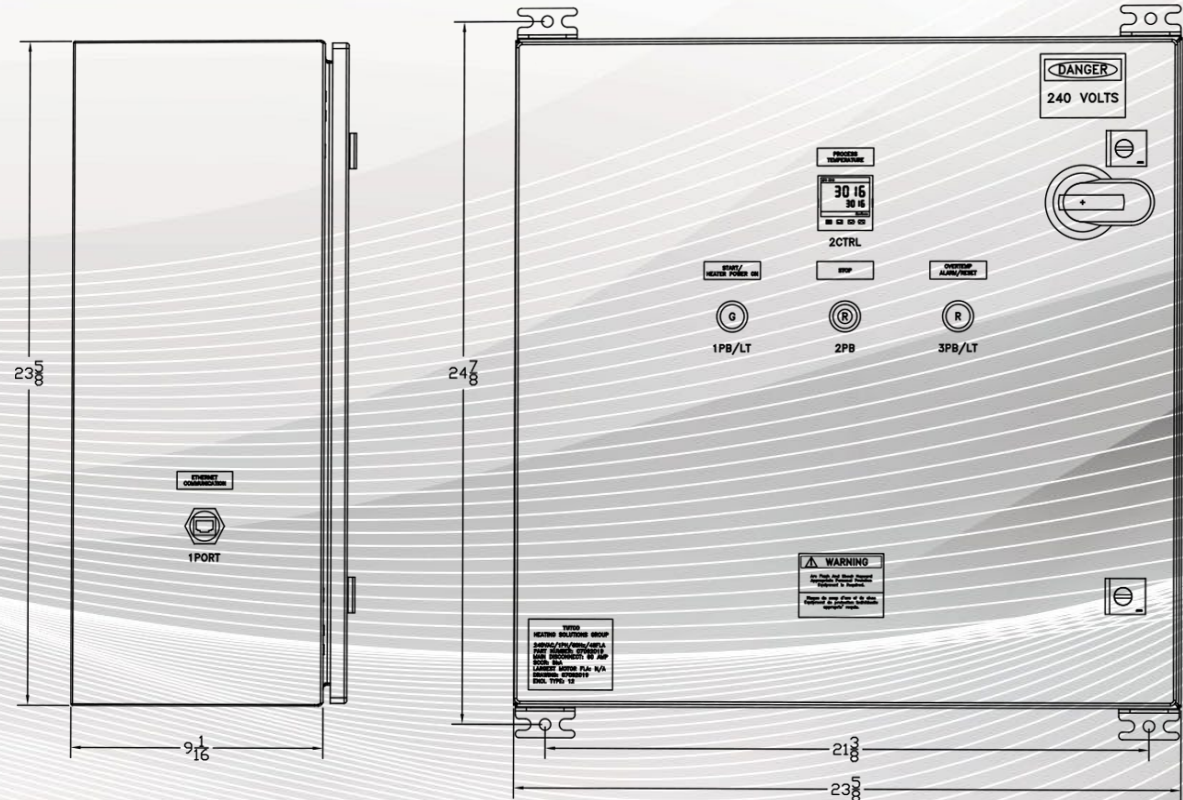
Applications

The controllers are ideal for industrial facilities and OEM solutions that need to meet required industry safety standards, maintain accurate control, and connect to the latest communication options for critical systems control.



What's in the Box?

- Instruction manuals
- Transformer tap hardware
- Wiring diagram
- Panel design drawings
- Bill of materials
- Wall mounting brackets



Key Features

- NEMA 12 Painted Steel Enclosure
- 240V to 480V in single and three phase, in 30A (24 FLA) or 60A (48 FLA) configurations
- 24”H x 24”W x 10”D (610mm x 610mm x 254mm)
- UL 508A, RoHS
- Ethernet Connection via Eurotherm Temperature Controller
- Custom features available for additional fees, contact [support](#) for details



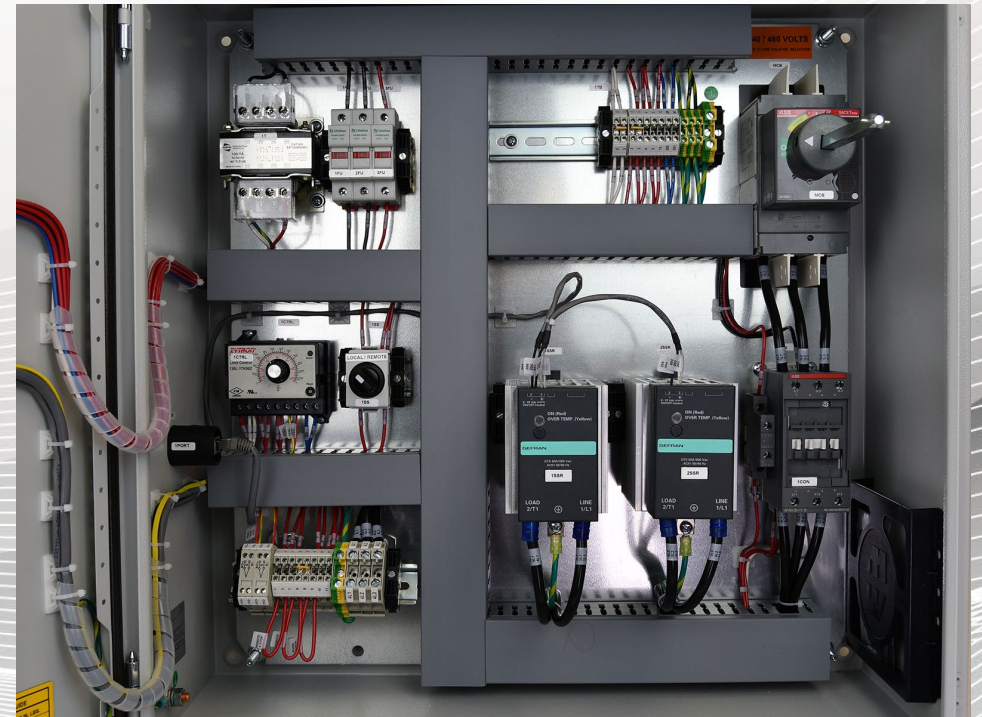
Wiring Safety

Wiring components, including the circuit breaker and the voltage transformer, reside behind finger-safe covers.



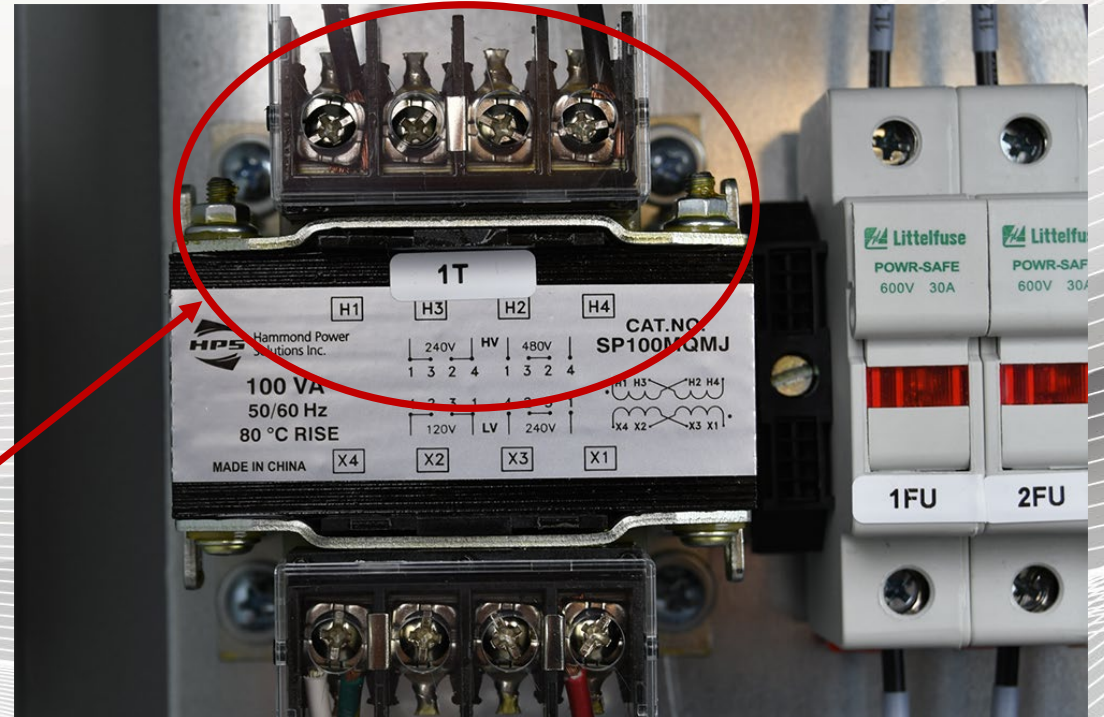
Multiple Voltage Options

Available in 30A and 60A versions, both new controller models have field adjustable voltage input taps allowing them to easily be adjusted for specific applications.



Voltage transformer clip

The transformer, which is set at 480V default from factory, can be easily change to 240V by removing and reinstalling the primary side jumper clip to the appropriate labeled position.



Ethernet Connectivity

The Ethernet port allows the system to report and remotely integrate into other popular industrial LAN operated solutions.

ETHERNET
COMMUNICATION

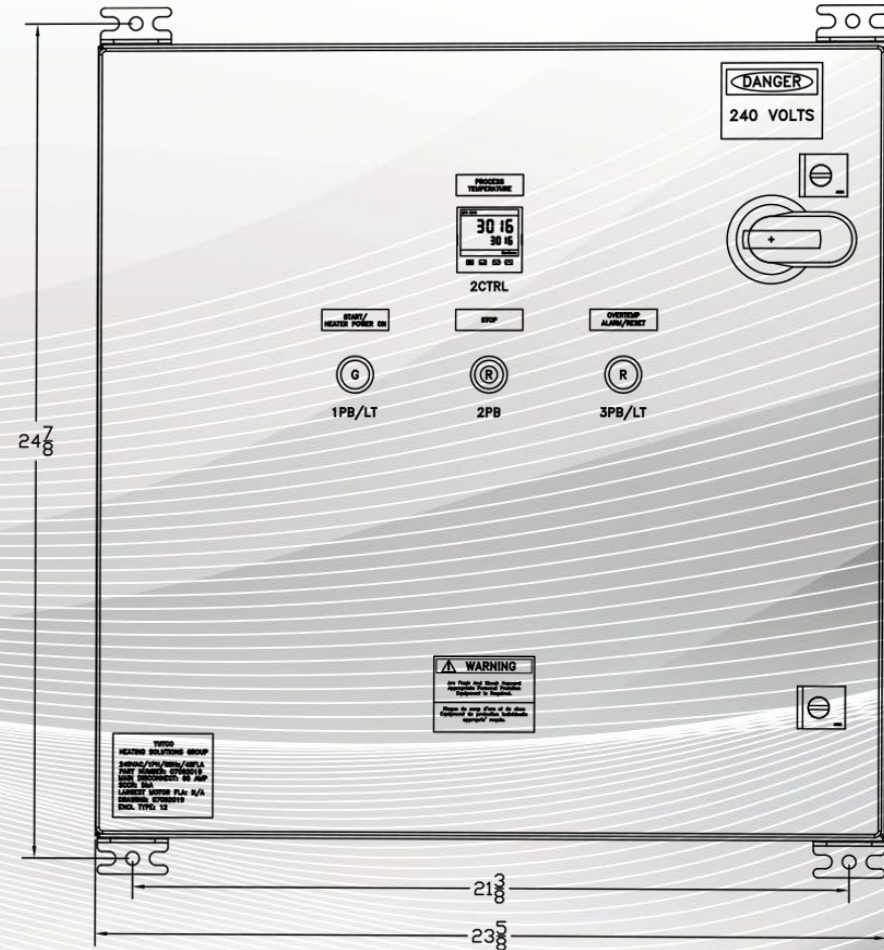


1 PORT



Local Control

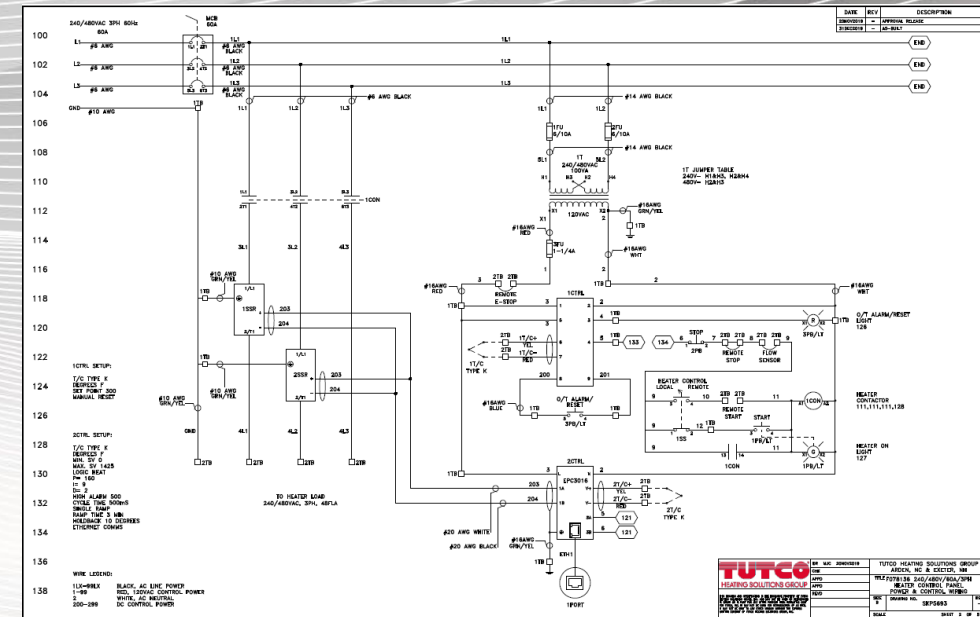
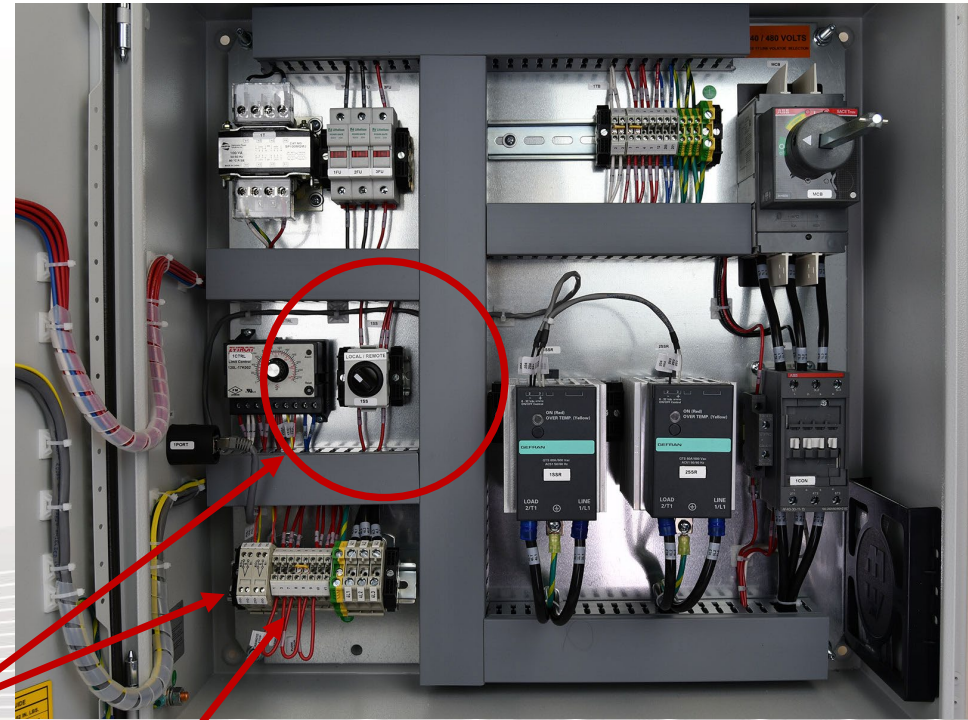
The controller features an illuminated start button, a stop button, and illuminated over-temperature alarm button, that provide local control from the front of the unit. An emergency stop button can be added on the front panel for an additional fee.



Remote Control

The panel can also operate in Remote Mode using the selector switch inside the panel and wiring in customer supplied start and stop buttons as detailed on the wiring diagram.

The panel also includes terminals to install a Remote E-Stop or other stop function, if required, at no additional cost.



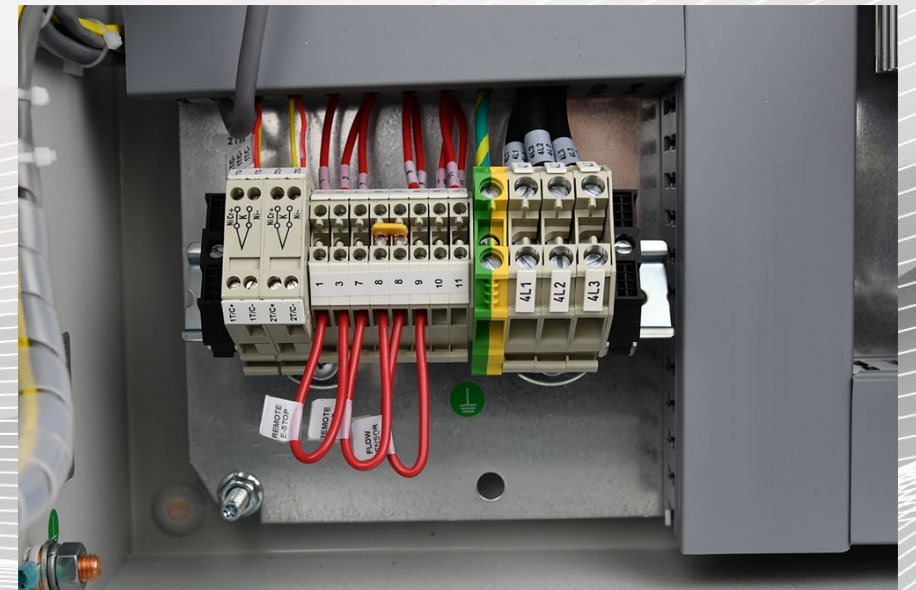
Temperature controller

The installed Eurotherm Series EPC3000 Temperature Controller provides high performance heater control. It is simple to operate with quick start codes, automatic help text, custom text messages, and auto-tuning.



Heater control connections

- Thermocouples
- Start and stop
- Over-temperature alarm
- Remote E-Stop
- Other Functional Stop Command (*ie. Flow Switch*)





SureHeat

Controller Model F078135 (30 AMPS)

Compatible Heaters:

F074723 - Max Air Heaters

F074724 - Max Air Heaters

F038823 - Threaded Inline Air Heaters

F038824 - Threaded Inline Air Heaters

F038825 - Threaded Inline Air Heaters

F038826 - Threaded Inline Air Heaters

F077065 - Threaded Inline Air Heaters

F077028 - Threaded Inline Air Heaters

F076418 - Threaded Inline Air Heaters

F074726 - Max Air Heaters

F074728 - Max Air Heaters

F074731 - Max Air Heaters

F074734 - Max Air Heaters

F077083 - Max HT Heaters

*** Any Heater up to 24 amp maximum load**

*Controller Model F078136 (60 AMPS)
Compatible Heaters:*

F074728 - Max Air Heaters
F074732 - Max Air Heaters
F074736 - Max Air Heaters
F077081 - Max HT Heaters
F077085 - Max HT Heaters
F063007 - Threaded Inline Air Heaters*

(*3PH configuration only)

- Any Heater up to 48 amp maximum load



TUTCO
HEATING SOLUTIONS GROUP

SureHeat



**SOUTHEAST
THERMAL SYSTEMS**

WWW.SETHERMAL.COM

SALES@SEETHERMAL.COM

phone: 704-399-4248

