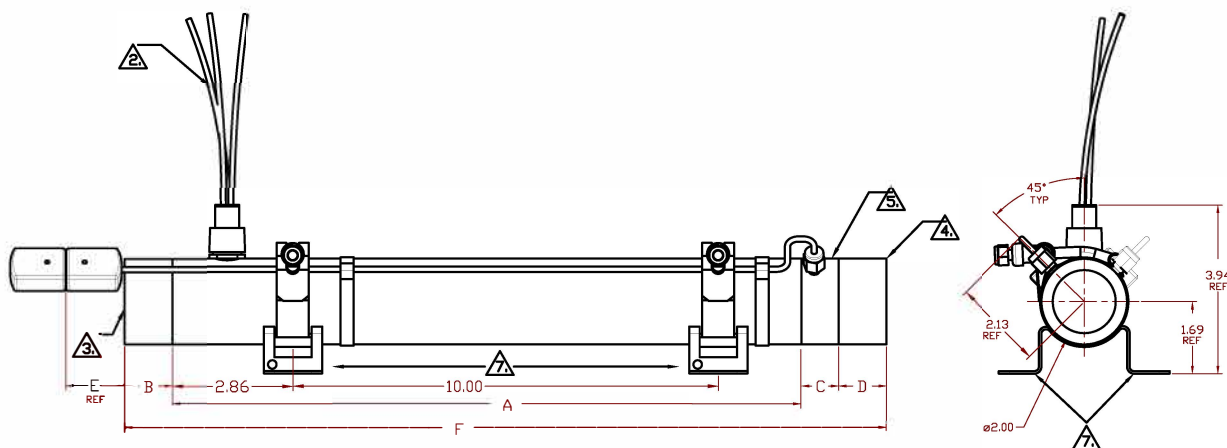


MOUNTING DETAIL
14 GA. 304 STAINLESS STEEL



INLET FITTING	A	B	THERMOCOUPLE	C	EXHAUST FITTING	D	E
NF	14.81"	0.094"	YES	0.875"	NF	0.094"	2.216"
1 1/4F	14.81"	1.125"	NO	0	1 1/4F	1.125"	1.185"
F = A + B + C + D							

- ⚠ OPTIONAL MOUNTING FEET SHOWN.
- ⚠ OPTIONAL MODIFICATION NUMBER IS ASSIGNED FOR CUSTOM CONFIGURATION.
- ⚠ OPTIONAL TYPE K THERMOCOUPLES MAY BE ADDED WITH A THERMOCOUPLE COLLAR @ 1 OR 2 PROBE CONFIGURATION AVAILABLE.
- ⚠ EXHAUST FITTING OPTIONS ARE: 1-1/4" NPT OR NO-FITTING RING
EXHAUST FITTINGS ARE MADE FROM 303 OR 304 STAINLESS STEEL
- ⚠ INLET FITTING OPTIONS ARE: 1-1/4" NPT OR NO FITTING RING
INLET FITTINGS ARE MADE FROM 303 OR 304 STAINLESS STEEL
- ⚠ LEADWIRE IS 14 GA. BLACK 600V 200C UL1199
STANDARD 18' LEAD

NOTES: 1. USE WITH CLEAN DRY AIR SUPPLY

PART NUMBER CONSTRUCTION

FT200-WWW-VVV-P-※F-※F-T/C (MOD)

SERIES DESIGNATION

DIA, 200 = 2' ✓
~~3 000V - 6 000V~~ WATTS

[240V, 48

1000

1 = ONE PHASE

3 = THREE PHASE

X - NO T/C FITTING

TF0 - FITTING, 0 T/C
TF1 - FITTING, 1 T/C

TF2 - FITTING 2 T/C

EXHAUST FITTING - NF = NO FITTING
1-1/2" = 1-1/2" NPT FEMALE TH

DATE - 2008 FEBRUARY

INLET FITTING - NF = NO FITTING
1-1/4" = 1-1/4" NPT FEMALE TH

CONFIDENTIAL

THIS DOCUMENT CONTAINS PROPRIETARY INFORMATION OF FARMAN CUSTOM PRODUCTS (AND ITS RECEIPT OR POSSESSION DOES NOT CONVEY ANY RIGHTS TO REPRODUCE, DISCLOSE CONTENTS, OR TO MANUFACTURE, USE, OR SELL ANYTHING IT MAY DESCRIBE). REPRODUCTION, DISCLOSURE, OR USE WITHOUT SPECIFIC WRITTEN AUTHORIZATION OF FARMAN CUSTOM PRODUCTS IS STRICTLY FORBIDDEN.

THIRD ANGLE
PROJECTION



**ALL INDEXES A
RE INDEXED IN**

OTHERWISE SPECIFY:
SCALE: 10

DO NOT SCALE D

TOLERANCES:
XX = ±.000

NOEL'S 3/4"

END OF MFT



SOUTHEAST
THERMAL SYSTEMS

TITLE FT200-1-1 1/4F-1 1/4F-TF2

FILE NO. ET200-1 PNG 7

DATE	11/12/15	SHT. 1 OF 1	SHEET
------	----------	-------------	-------

[illegible]