

A _____
 B _____
 C _____
 D _____

E _____
 F _____
 G _____
 H _____

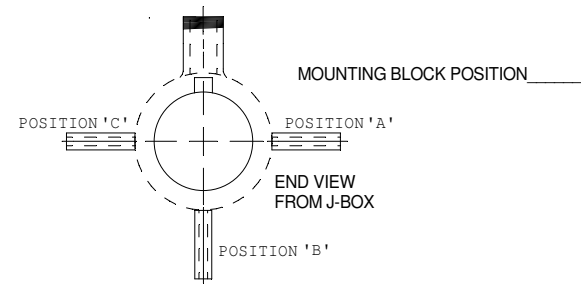
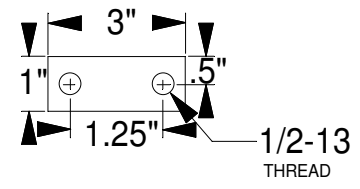
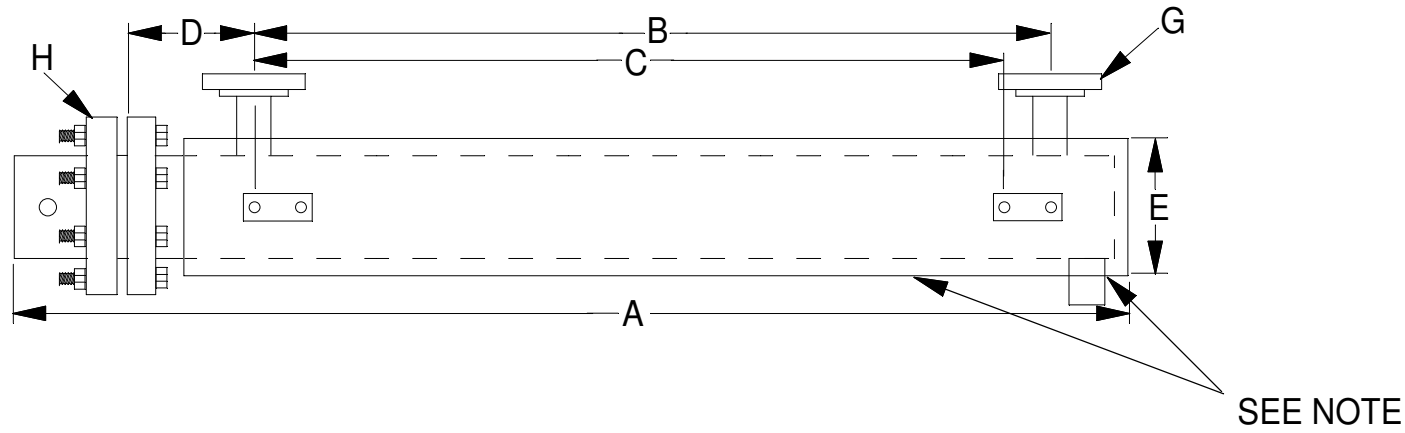


FIGURE 2 : FLANGED CONNECTIONS



NOTE: 1/2" NPT DRAIN PLUG OPTIONAL
 ALL CIRCULATION HEATER VESSELS
 COVERED WITH A GALVANIZED STEEL
 SHELL UNLESS OTHERWISE SPECIFIED

DIMENSIONS ARE IN INCHES (MM)
 TOLERANCES ARE AS FOLLOWS, UNLESS NOTED
 1/XX₊ + 1/8" (3mm) 1/XX₊ + 1/16" (1mm)
 .0X₊ + .01" (.25mm) .00X₊ + .005" (.1mm)
 ANGLES ± 1°

NOTES:

REVISION DATE	REV. NUMBER	DESCRIPTION OF REVISION	REV'D BY	APP'D BY



TITLE: FLANGED HEATER, FLANGED FITTINGS		
CUSTOMER:		
DESIGN BY:	DESIGN DATE:	
DRAWN BY:	DRAWN DATE:	
CHECKED BY:	CHECK DATE:	
RELEASED FOR:	SCALE:	SHEET No.:
DRAWING NUMBER:	REV.:	