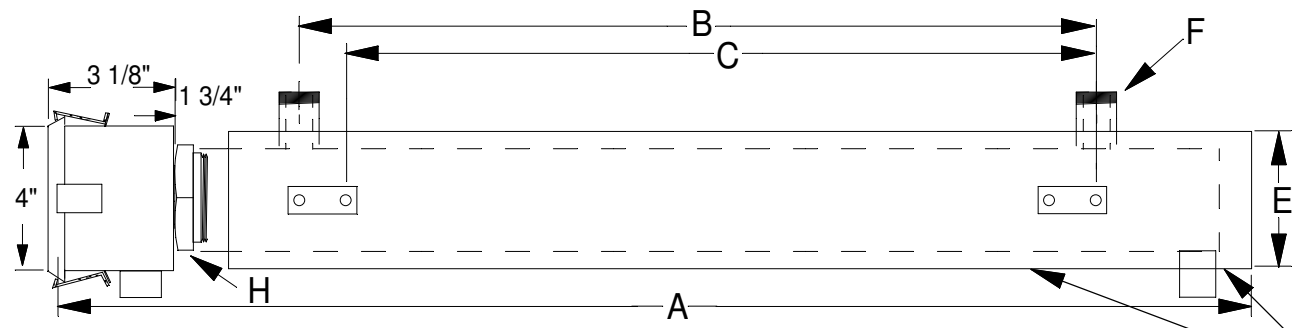
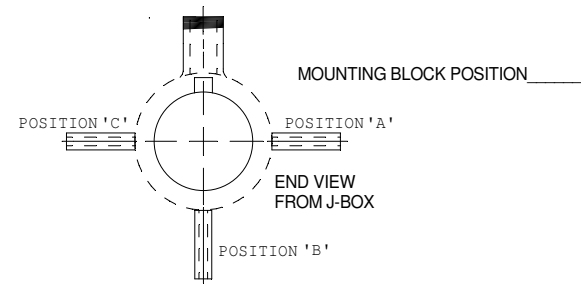
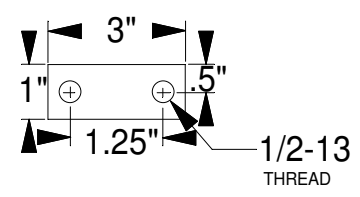


A \_\_\_\_\_  
 B \_\_\_\_\_  
 C \_\_\_\_\_  
 D \_\_\_\_\_

E \_\_\_\_\_  
 F \_\_\_\_\_  
 G \_\_\_\_\_  
 H \_\_\_\_\_



SEE NOTE



NOTE: 1/2" NPT DRAIN PLUG OPTIONAL  
 ALL CIRCULATION HEATER VESSELS  
 COVERED WITH A GALVANIZED STEEL  
 SHELL UNLESS OTHERWISE SPECIFIED

DIMENSIONS ARE IN INCHES (MM)  
 TOLERANCES ARE AS FOLLOWS, UNLESS NOTED

1/XX <sub>+</sub> + 1/8" (3mm)	1/XX <sub>+</sub> + 1/16" (1mm)
.0X <sub>+</sub> + .01" (.25mm)	.00X <sub>+</sub> + .005" (.1mm)

ANGLES ± 1°

NOTES:

REVISION DATE	REV. NUMBER	DESCRIPTION OF REVISION	REV'D BY	APP'D BY



TITLE: <b>SCREWPLUG HEATER, THREADED FITTINGS</b>		
CUSTOMER: _____		
DESIGN BY: _____	DESIGN DATE: _____	
DRAWN BY: _____	DRAWN DATE: _____	
CHECKED BY: _____	CHECK DATE: _____	
RELEASED FOR: _____	SCALE: _____	SHEET No.: _____
DRAWING NUMBER: _____	REV.: _____	