

POWERBLANKET QUICKFIT HEATER BOXES

PROTECT

Protect your critical equipment and materials from freezing.

ELIMINATE SHUTDOWNS, DOWNTIME, & COSTLY REPAIRS

Keep your Transmitters and Instrumentation from freezing up and shutting down your operations.

QUICK & EASY INSTALLATION

Easily install the heater box. Measure, cut, and protect your valves quickly.

FULL COVERAGE

Insulated, Full-Wrap Design that fully encloses & heats your instrumentation.

HAZARDOUS LOCATIONS

Have peace of mind with CID2 certified products.

WINTERIZE YOUR EQUIPMENT QUICKLY

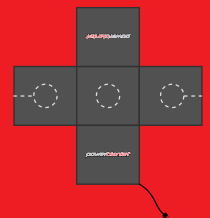
PROTECTING CRITICAL EQUIPMENT FROM THE COLD SHOULDN'T BE A HUGE PRODUCTION

Powerblanket QuickFit heater boxes protect valves, instrumentation, and other equipment to keep your operations running smoothly regardless of the weather. These heaters make installation a breeze and **prevent costly shutdowns, downtime, and repairs.**

EASILY CUSTOMIZABLE HEATER BOXES

FIELD ADJUSTABLE BOXES MAKE INSTALLATION EASY

- Field adjustable sides and insulation
- Freeze protection to -40°F (-40°C) with 40 mph (64kph) wind
- Integral temperature control, no adjustment required
- Complete, Even-Heat with Innovative Heat Spreading Technology Throughout
- Fully insulated to minimize heat loss



**** NOTE:** If you require custom sizes or cutout locations, then fill out the worksheet addendum. ******

powerblanket®

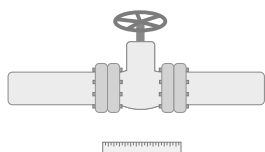
QUICKFIT HEATER BOXES

ELECTRICAL SPECIFICATIONS						CERTIFICATIONS AND RATINGS	STANDARDS
Model	Dimensions	Volts	Wattage	Amperage	Cord Type/Length	Electrically Heated Industrial Thermal Blankets for	
CBQF12x12x12-CID2T4	12"x12"x12"	120 VAC	92 Watts	0.77 A	SOW/Standard 15ft, Custom Lengths Available	Class I, Division 2 Groups A, B, C and D Hazardous Locations Temperature Code: T4 cETLus 3170655	<ul style="list-style-type: none"> Certified to CSA C22.2 No. 130, "Requirements for Electrical Resistance Heating Cables and Heating Device Sets" Certified to CSA C22.2 No. 213, "Non-incendive Electrical Equipment for Use in Class I, Division 2 Hazardous Locations" Conforms to ANSI/ISA 12.12.01, "Non-incendive Electrical Equipment for Use in Class I and II, Division 2 or Class III, Division 1 and 2 Hazardous (Classified) Location" Conforms to ANSI/UL 499, "Standard for Safety for Electrical Heating Appliances" Exterior Vinyl Shell: Conforms to UL 94VTM-1 Thin Material Burning Test
CBQF18x18x18-CID2T4	18"x18"x18"	120 VAC	209 Watts	1.74 A			
CBQF24x24x24-CID2T4	24"x24"x24"	120 VAC	360 Watts	3.0 A			
CBQF12x12x12G-CID2T4*	12"x12"x12"	120 VAC	92 Watts	0.77 A			
CBQF18x18x18G-CID2T4*	18"x18"x18"	120 VAC	209 Watts	1.74 A			
CBQF24x24x24G-CID2T4*	24"x24"x24"	120 VAC	360 Watts	3.0 A			

* Grey vinyl products protect down to -65°F / -53°C

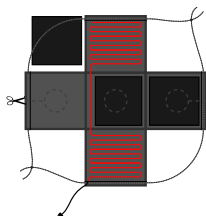
PROTECT YOUR CRITICAL EQUIPMENT IN A HURRY

STEP 1



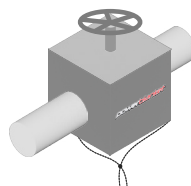
Measure Valve & Order Appropriate Sized QuickFit Box

STEP 2



Cut Out Needed Openings in Shell and Removable Insulation Inserts

STEP 3



Place Over Valve and Tighten Drawstrings

STEP 4



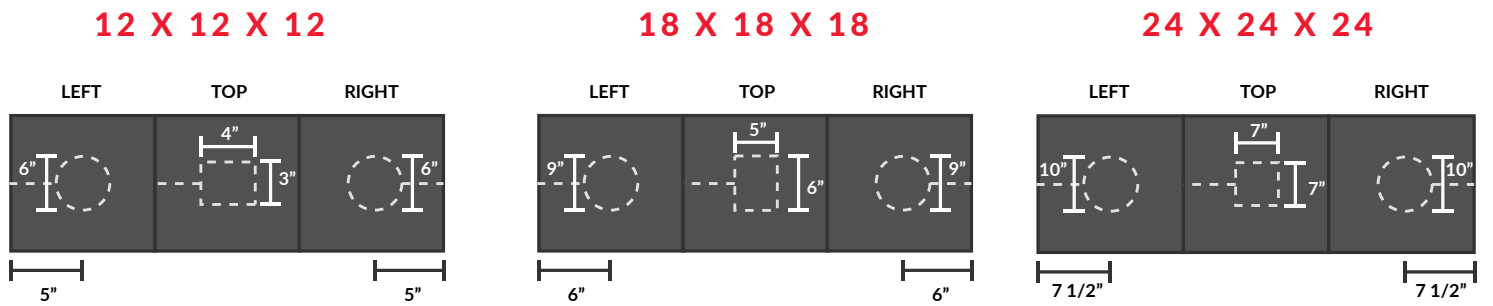
Plug in For Complete Freeze Protection



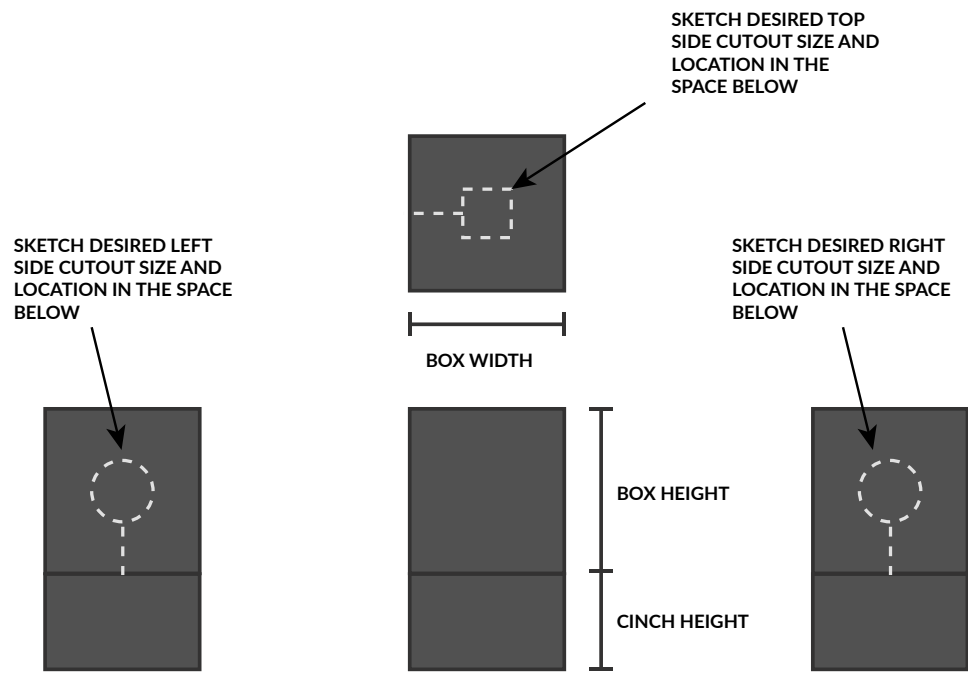
QUICKFIT CUSTOM WORKSHEET

STANDARD SIZES & CUTOUTS

Below are pictures of standard sizes and cutouts. If you require custom sizes or cutout locations, then fill in the worksheet below.



INSTRUCTIONS



SKETCHES

LEFT SIDE CUTOUT

TOP SIDE CUTOUT

RIGHT SIDE CUTOUT