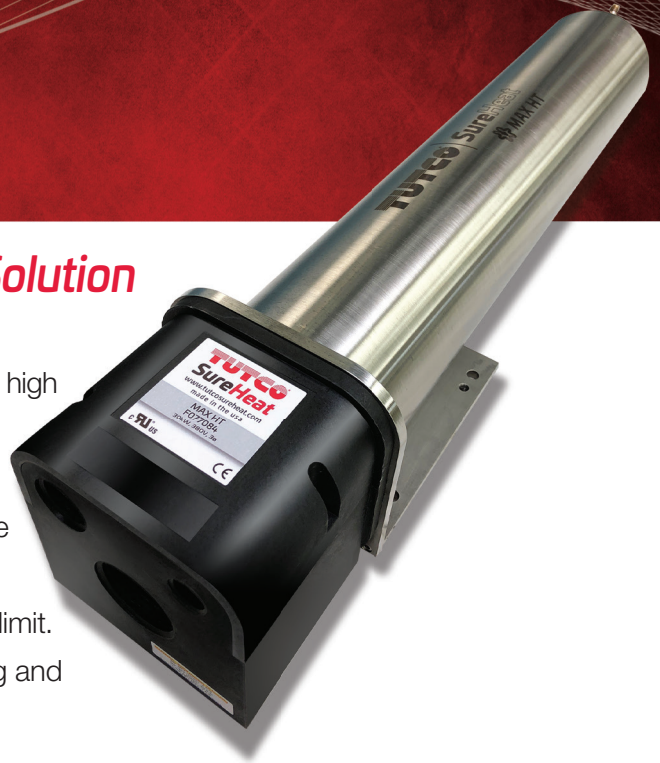


Max HT Air Heaters

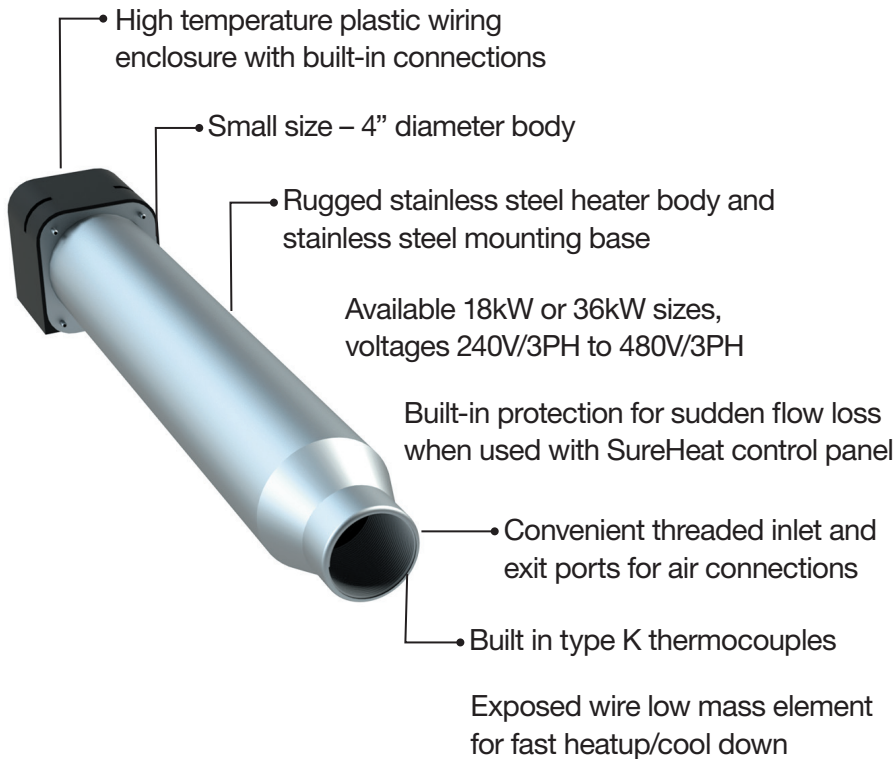
A Closed-Loop High Temperature Heat Solution

Temperatures up to 1652°F (900°C)

The Max HT provides a compact and efficient heater solution for high temperature applications up to 1652°F (900°C). A dual type “K” thermocouple with a convenient terminal block is included for ease of wiring. Each exposed thermocouple is used to measure inlet and exit air temperature. One is typically used for process temperature control and the other to monitor high temperature limit. Each heater has a convenient method for mounting the housing and offers a ground stud located at the inlet of the heater.



Features and Benefits



Product Specifications

Maximum Inlet Air Pressure
60 PSI (4 BAR)

Maximum Inlet Air Temperature
200°F (93°C)

Maximum Exit Air Temperature
1652°F (900°C)

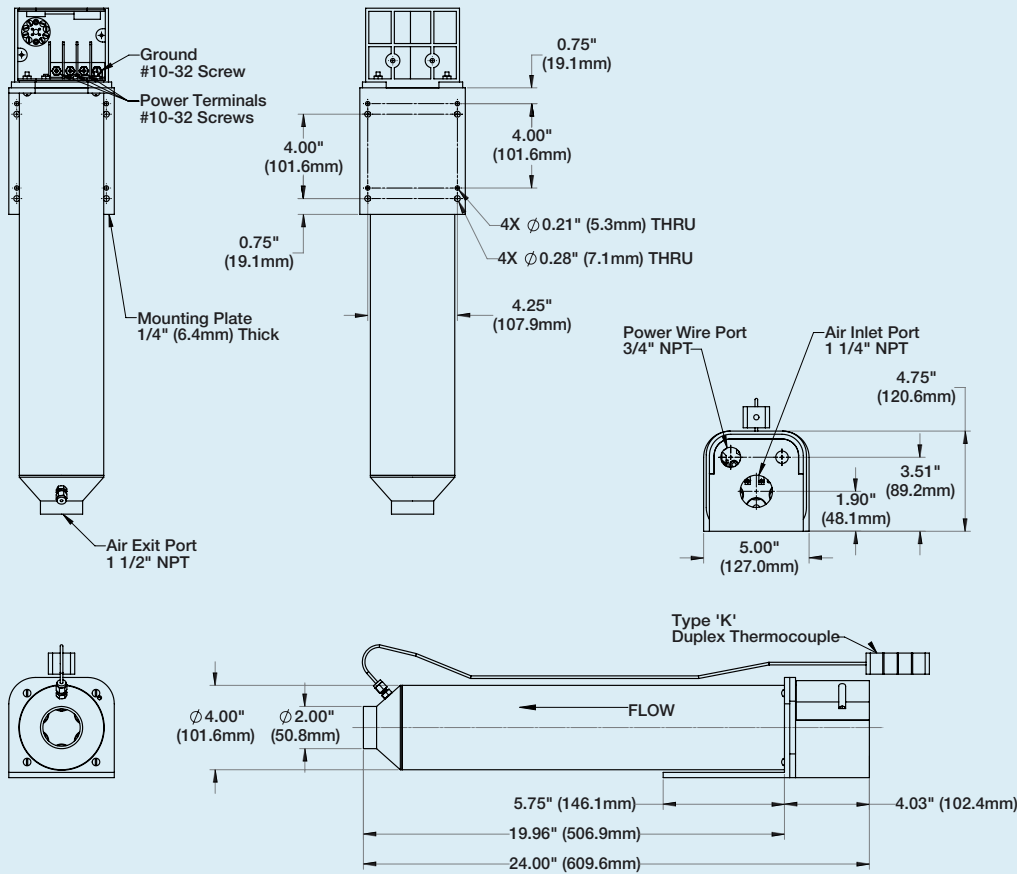
Minimum Airflow (Recommended)
18 SCFM (510 SLPM)

Exit Air Connection:
1-1/2” FNPT

Inlet Air Connection:
1-1/4” FNPT



Dimensions / Installation Reference



SureHeat® Max HT Products

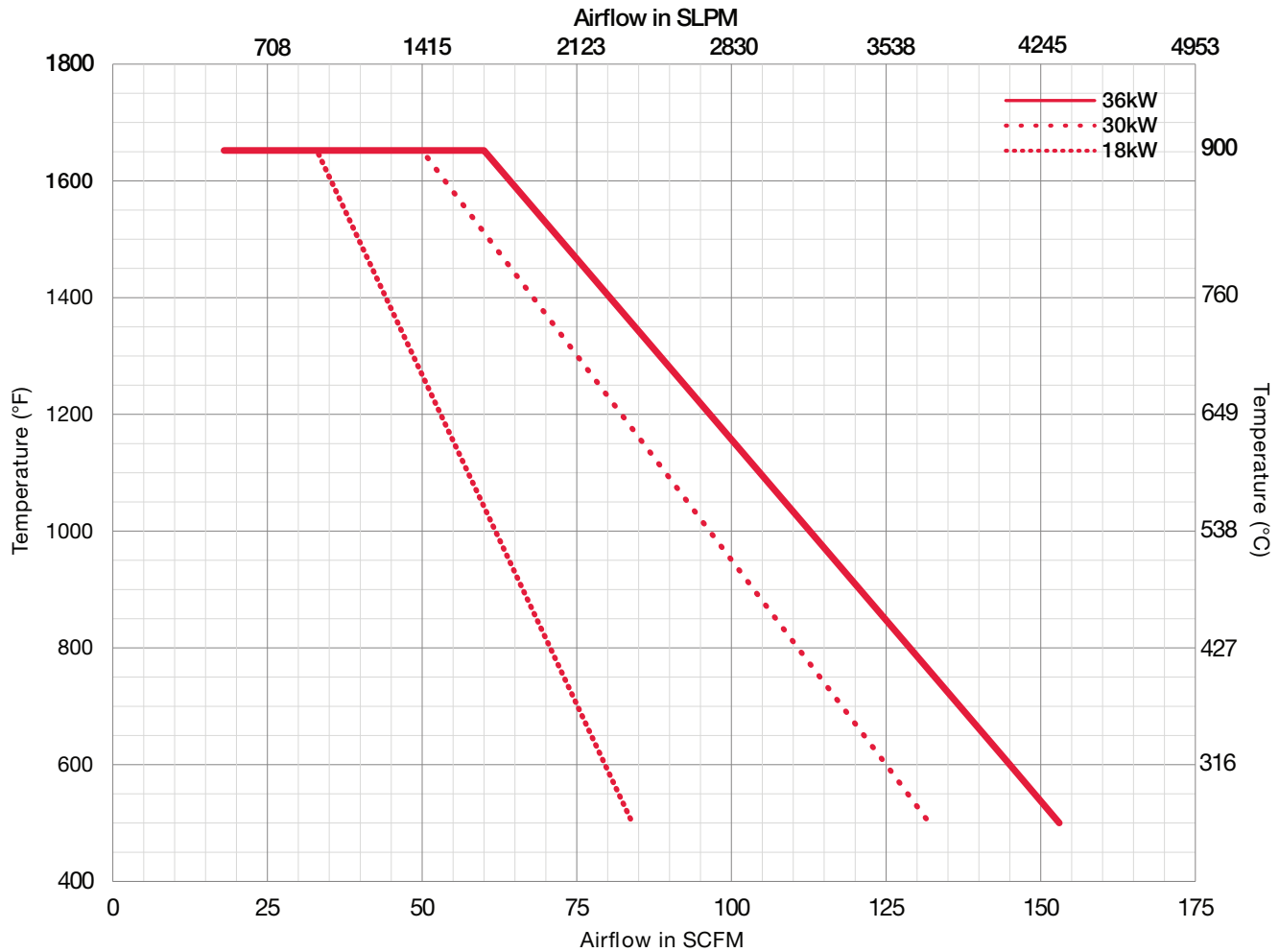
Part Number	Power kW	Max. Volts / ø	Max. Amps	Replacement Element
F077081	18.0	240 / 3	43.4	F206707
F077082	18.0	380 / 3	27.4	F206662
F077083	18.0	480 / 3	21.7	F206663
F077084	30.0	380 / 3	45.6	F206664
F077085	36.0	480 / 3	43.4	F206598

Compatible Controllers

Part Number	Input Power	Phase	Amps	Labeling
F078135	240/480V 60Hz	3 Phase	30 Amps	UL 508A, RoHS
F078216	380/400V 50/60Hz	3 Phase	30 Amps	UL 508A, CE, RoHS
F078136	240/480V 60Hz	3 Phase	60 Amps	UL 508A, RoHS
F078217	380/400V 50/60Hz	3 Phase	60 Amps	UL 508A, CE, RoHS

Performance Curves

MAX-HT Maximum Performance



Notes:

- Temperature is measured by a dual “K” T/C sensor located inside the Max HT Housing
- Use of other sensor types and/or locations can result in heater damage
- Minimum airflow for accurate control is 18 SCFM
- Maximum air temperature is 1652°F (900°C)
- Operating above temperature will void the warranty



**SOUTHEAST
THERMAL SYSTEMS**

WWW.SETHERMAL.COM

SALES@SETHERMAL.COM

phone: 704-399-4248

